

August 2022

PROPERTY MATTERS

The **Methodist** Church 

Welcome to the August edition of Property Matters with a focus on property-related updates and guidance.

For the latest property guidance, please refer to the [Property pages](#).

If you have any feedback, please email the [Property Support Team](#).

Net Carbon Zero Case Study

A managing trustee from [Baildon Methodist Church](#) in Bradford tells the story of how their church got down to net carbon zero. The story is spread across the four steps of the [Net Carbon Zero guidance](#). [Click here to read](#).



Methodist Insurance Update

Fundraising in Less Affluent Areas

Our latest fundraising guide provides tailored support for churches in less affluent areas. The guide gives tips on how your church can engage the community, where you can look for funds and the key points to consider for a great grant application. [Read the guide](#)



What Can You Do to Protect Against Arson

The summer months sadly bring about an increase in cases of arson. A walk around your church grounds might help you identify some simple steps that can reduce the risk, for example, keeping refuse containers at least 10 metres from buildings. [Protect your church](#)



Awards now closed

Our 150th celebratory awards are now closed. Thank you to everyone who took the time to enter. We're announcing the winners in Dialogue, on our [Facebook page](#) and in the monthly e-news in November. [Follow us on Facebook](#)



Electrical Wiring and Fires in Churches

Numerous church fires can be due to faulty electric wiring or apparatus. We have detailed guidance on the types of damage to look out for and when it is time for an inspection.

[Electrical wiring guidance](#)



Need Funding for a Church Project?

Since its establishment, Benefact Trust's Methodist Grants Programme has awarded just over £11million to churches and we want to do more. If you have a project that will positively impact lives in your community – you can find information on how to apply for a grant on our website.

[Find out more about the Methodist Grants Programme](#)





METHODIST INSURANCE

Protect your home and support your church or charity

*Terms and conditions apply.

20% donation*

How One Church Counted on Nature this June

Between the 4 and 12 June, over 270 Churches took part in [Churches Count on Nature](#), recording how many mammals, birds, insects, or fungi were present in their outdoor spaces. Many churches also used CCoN as an opportunity to reach out to their local community. For example, [St Michael's in Wiltshire](#) creatively engaged hundreds of school children in their outdoor church space.



Churches Count on Nature runs alongside [Love Your Burial Ground week](#). Next year's date is **Saturday, 3rd June to Sunday, 11th June 2023**. [Click here to learn more](#).

Digital and Property

There is a growing trend of using technology to create a digital copy of the church. These digital copies can be used for a variety of purpose including:

- encouraging more footfall through the doors
- used as a pre-loss asset and inventory register should there be a floor or fire
- assist in the surveying and inspection process as part of a building project
- record interiors as a guide for pricing when churches close



You can find out more information from the [The Heritage Digital Academy](#), which is supported by DCMS as part of the Heritage Fund's Digital Skills for Heritage initiative. This new project is a series of unique digital business support courses

focussed on innovation, enterprise, and organisational planning. The courses provide all types of Heritage organisations with the tools they need to make effective use of digital within strategic and operational planning. [Click here to learn more about the sessions on offer and how to get involved.](#)

Alternatively, you could look at companies that provide this service. [Here is a link to one company](#) and you can view an [example of St Marks church](#).

HSE Updates

Health and Safety Law Poster - What you need to know



The poster explains British health and safety laws and lists what workers and their employers should do. If you employ anyone, you must either:

- display [the health and safety law poster](#) where your workers can easily read it
- provide each worker with the equivalent health and safety law leaflet

There are various versions of the poster, so you can select the most appropriate for your business. You can:

- [download the equivalent leaflet](#)
- [purchase a hard copy from HSE Books](#)

Now is the time to get gas checks

HSE recommends that now is the time to get gas appliances checked.

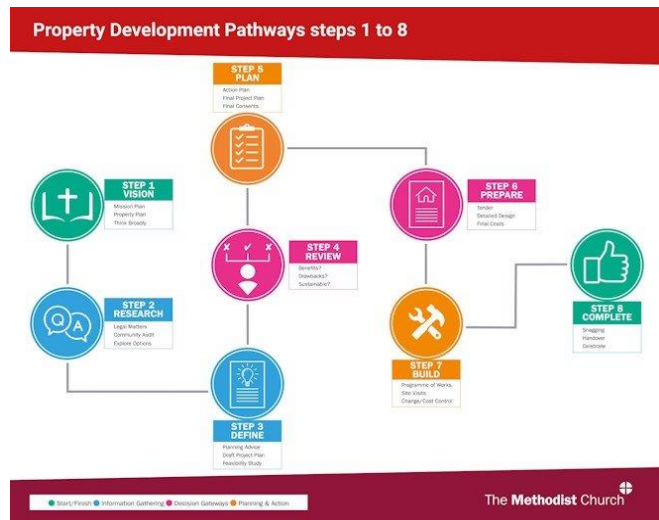
Getting household gas appliances and pipes checked in summer can ensure your home is safe while also helping to keep bills lower in winter.

[Read more in the press release.](#)

Homeowners should get all gas appliances (boilers, cookers and fires), flues and pipework regularly maintained and serviced every year by a qualified engineer listed on the Gas Safe Register. Our domestic gas website has [useful guidance, advice and resources](#), while you can also receive all the latest news and updates by [subscribing to our domestic gas ebulletin](#).

Property Development Pathways

We are pleased to announce a new set of guidance on how to undertake a property project on Methodist properties called the [Property Development Pathways](#). The aim of this guidance is to improve communication and better publicise resources that are available for managing trustees.



Within the [Property Development Pathways](#), there is a **core path** that has a common set of steps to follow for every project. These core aspects should be followed in order to achieve success - both for the mission and for the development of the property. The guidance can also be scaled up or scaled down depending on the size of the project. [Click here to view a summary of the 8 core steps.](#)

In addition to the core pathway, there are supplementary pathways for:

- [Conservation & Listed Buildings projects](#)
- [Net Zero Carbon projects](#)
- [Project that involve a partnership](#)

The information and guidance is available for managing trustees to use as dictated by any additional parameters of the project. The pathways are designed to be worked through methodically and have been divided into bitesize steps. Thus, it is recommended to begin with Step 1 of the core pathway followed by Step 1 of a supplementary pathway if applicable.

Community Ownership Fund

There is a [Community Ownership Fund](#), which forms part of the Government's Levelling Up Initiative offers funding for those communities who wish to purchase and renovate assets which can then be used for community purposes. It offers funding to cover the purchase, with match funding, and refurbishment of the asset (including heritage buildings/churches). It has been established to give communities a better ability to compete in the market place. These assets can be designated Assets of Community Value but this is not essential, and it covers the UK.



[Click here to learn more.](#)

The Great Big Green Week

[Get involved in The Great Big Green Week \(24 September - 2 October\)](#)

The Great Big Green Week is the UK's biggest call for action on climate change and nature, showing decision makers that people from all walks of life are stepping up to take action - and that we need them to step up too.

Last year over 5000 events took place, with more than 200,000 people showing up for the planet in their community and online. As members of The Climate Coalition, we're encouraging as many Christians and churches as possible to take part.

This can show that we serve a God of Creation

and to add our efforts to those of others for the greatest combined impact. Could you or your church host a community event as part of the [Great Big Green Week](#)?

A litter pick perhaps, some wildlife gardening, or a climate coffee morning - whatever your idea is - get involved today.



Net-Zero in my Neighbourhood

Do you want to make your neighbourhood more climate-friendly?

Sign up to Net Zero In My Neighbourhood, a campaign to help you effectively lobby local councils for climate action. [Click here to find out more.](#)



Listed Building Advisory Committee (LBAC) Meeting Dates:

- **11 October 2022** - Deadline for paper is 20th September 2022
- **24 January 2023** - Deadline for paper is 3 January 2023
- **18 April 2023** - Deadline for paper is 28 March 2023
- **18 July 2023** - Deadline for paper is 27 June 2023

Supporting the Methodist Connexion

Methodist Insurance has been protecting the property of the Methodist Church since 1872. We are a Public Limited Company owned by shareholders and independent of the Methodist Church. The company operates like a mutual by returning most of our profits back to our community in the form of a significant financial contribution to the Methodist Connexion. [Find out more.](#)



**METHODIST
INSURANCE**
MAKING IT COUNT

Property Matters is a monthly newsletter focused on giving updates on property related guidance and legalisation as well as providing information and links to related subjects. To view the most current content, please refer to the [Property pages](#) on the website. We cannot know about everything that's going on, so please do [email us](#) if you have any feedback or ideas for items to include.

Methodist Church House, 25 Marylebone Road, London, NW1 5JR 020 7486 5502
methodist.org.uk
Registered charity no. 1132208

[Unsubscribe](#)

[Subscribe to other newsletters](#)

[Change your details](#)

[Click here for a PDF version](#)