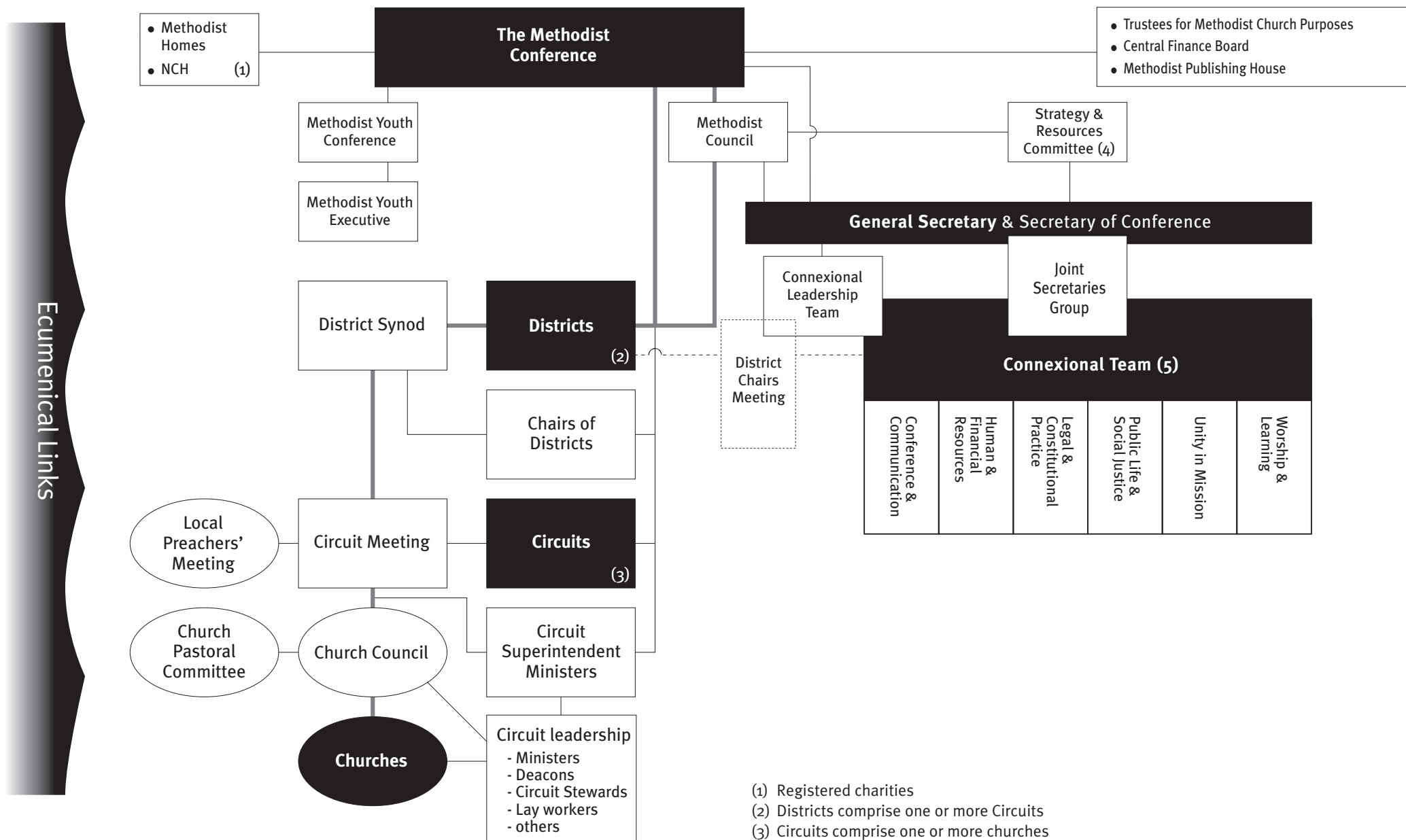


The Methodist Church in Britain

Its Structure and Organisation



— Elected representation of church members

Diagrammatic only. Based on the Constitutional Practice and Discipline of the Methodist Church

Developed by Chris Kitchin, Head of Communication

(1) Registered charities

(2) Districts comprise one or more Circuits

(3) Circuits comprise one or more churches

(4) Formerly Methodist Council Executive

(5) Formerly Conference Office and Connexional Team

There are over 5,900 churches, around 630 Circuits in 33 Districts in Britain.